

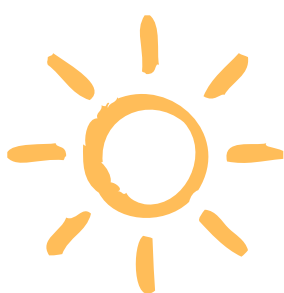
SAFARI PACKING LIST:

ESSENTIALS YOU SHOULD BRING TO YOUR SAFARI TRIP



INSECT PROTECTION:

- Use Mosquito Repellent with DEET
- Bring Mosquito Net for sleeping
*(just in case, most of the hotels/lodges provide them)



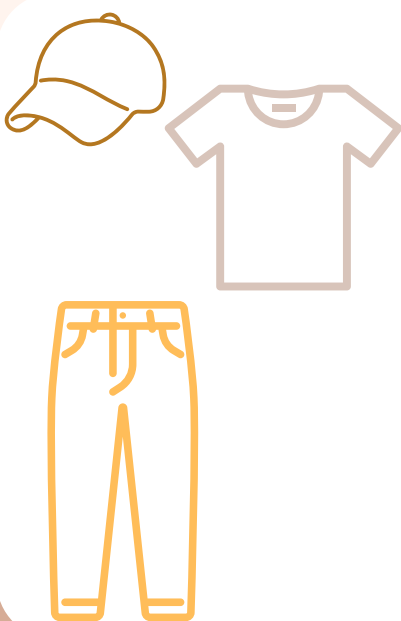
SUN PROTECTION

- Sun Block Cream
- Sun Glasses (also to protect you from the dust)
- Sun Hat
- Light long-sleeved shirt



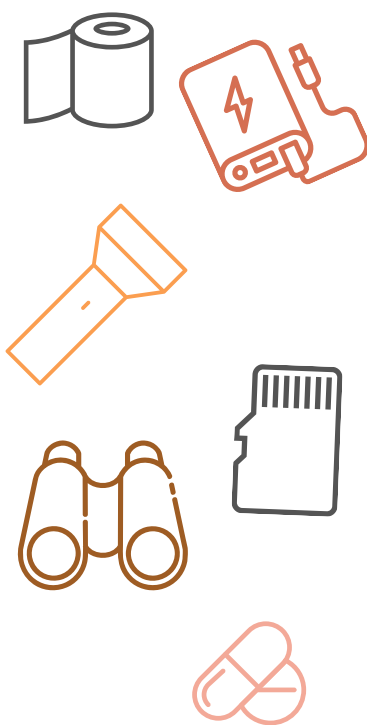
COMFORTABLE SHOES

- You will just be sitting & occasionally standing in a safari vehicle so no need for trekking shoes or boots.
- Wear lightweight sneakers instead.



CLOTHES IN EARTH COLORS

- Earth Colors (beige, brown, dark green...) won't attract insects
- Bright and intense colors may scare the animals + attract insects
- AVOID Blue and Black colored clothes (these attracts tse-tse flies)
- Bring warm jacket for the evening



Extras:

- Flashlight (especially if you are sleeping over in a camping or safari lodge)
- Toilet Paper (always)
- Binoculars
- Toiletries + towel (might not be provided in safari lodges)
- Power Bank for charging your phone
- Extra memory card for your camera/phone
- Probiotics and/or diarrhea pills (just in case)



DON'T:

- Don't use bright colored clothes
- Don't use blue or black colored clothes (attracts tsetse flies)
- Don't use animal prints or camouflage clothes (in some places it's forbidden)